

Periodontal Implant Center

Practice Limited to Periodontal Therapy and Dental Implants
Jacob D. Hager, DDS, MS - Diplomate American Board of Periodontology



Implant Restorations – Front Teeth



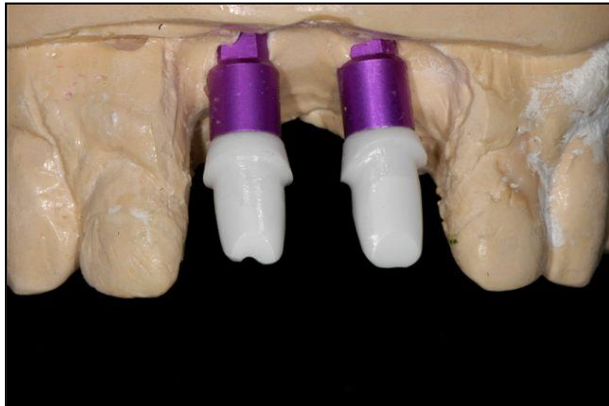
Essex Appliance for temporary replacement of missing teeth



Essex Appliance for temporary replacement of missing teeth



Customized healing abutments placed on implants to support gingival contours



Customized abutments to support the gingiva and final crowns
(are often metal instead of white)



Custom abutments seated in patients mouth



Final restorations in place